

BISAN GOVERNMENT EDITION



A solution that meets the highest industry standards, specializing in Government Sector Public Financial Management for accounting software and control. Bisan Government solution is optimized for public finance, with fiscal controls and government financial management rules built into the main code. Providing a centralized fully integrated online Financial Management Information System, featuring a user-defined chart of accounts and segments of any size, with sub ledgers giving the user the flexibility of tracking transactions to the smallest detail providing a tool for auditing and transparency. With a user-friendly interface, integrated with flexible financial budgeting and control module. Clients could tailor segmented accounts to cope with stakeholder's requirements with a wide range of reporting capabilities, while decentralizing transaction processing and providing a powerful instrument for improving control, efficiency, transparency and effectiveness with instant real time live reporting.

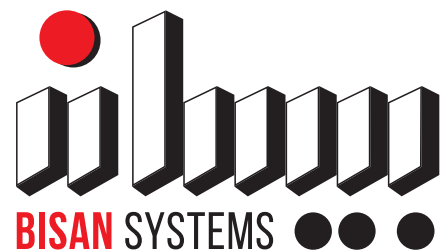


BISAN SYSTEMS LTD.
BATN EL HAWA STREET
P. O. BOX 530
RAMALLAH, PALESTINE

TEL: +970 2 298 5941
FAX +970 2 298 5942

JERUSALEM: +972 2 627 7196
JAWWAL: +970 599 677 904
OORED00: +970 562 900 020
JORDAN: +960 6 400 8017

USA: +1 617 902 2261
WHATSAPP +970599677904
info@bisan.com



O U R P U R P O S E

**WHEREVER WE GO,
WE IMPROVE
MANAGEMENT
DECISION MAKING.**

WHY BISAN?

BISAN GENERAL FEATURES

BISAN FINANCIAL FUNCTIONS

BISAN GOVERNMENT MODULES

Banks & Treasury Management

Budget Execution & Control Module

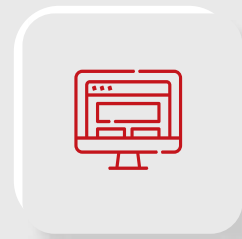
Procurement Management

CYBERSECURITY & ACCESS RIGHTS

35+ YEARS OF EXCELLENCE WHY BISAN?



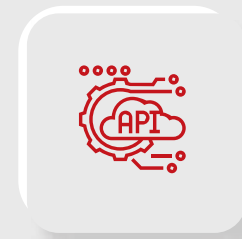
Using Bisan Solutions



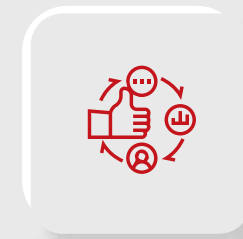
Available Anytime...
Anywhere



Zero Investment
in Hardware



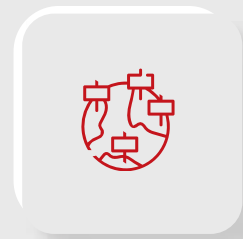
A Modular Seamlessly
Integrated System with a
Single Point of Entry



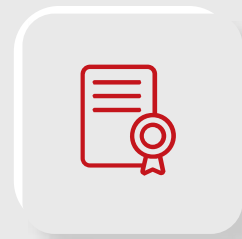
Adaptable to your
own Business and
Industry Needs



100% Secure Access to
Real Time Information



International Market
Presence



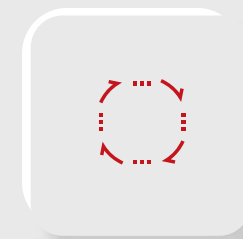
Licensed in Many
Countries



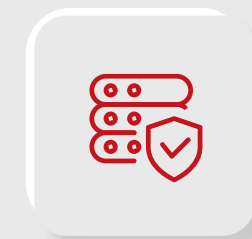
Continuous Upgrades
at No Additional Cost



Cloud Application



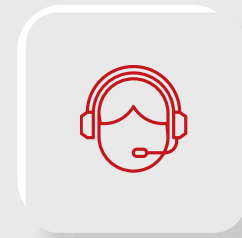
Redundant Sites



Multi-layer Security



Fast and Comprehensive
Implementation



365 Days Support
Availability



An ERP Specifically
Designed to Meet
Today's Challenges



Available in Eight
Languages



Optimized Decision Making



Reliable

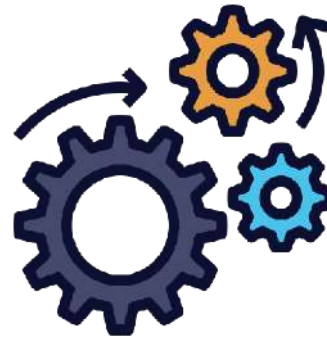
BISAN GENERAL FEATURES

Bisan is continuously upgraded with enhancements and new features to improve efficiency and provide higher accuracy.



TRULY MULTILINGUAL SYSTEM

A unique multilingual implementation providing the user the option to switch between desired languages at any given time during a session. An enhanced capability that allows entering sales vouchers in a certain language and printing it in another.



SEGMENTED ACCOUNTS

You could tailor accounting segments like departments, cost centers, projects and others to follow management requirements for posting accounting entries and reporting.



SPLIT VIEWS

A feature to split the view to multiple screens of the open tabs of files, transactions or reports in the system.



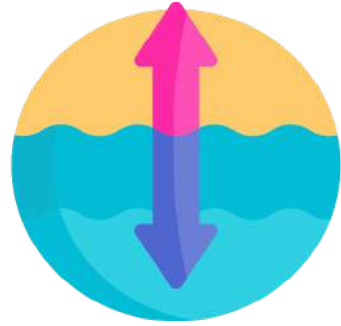
WEB BASED

The main screen is designed to clearly differentiate the application from the browser. The system supports all internet and intranet functionalities. The system is accessible from any internet connection, providing high data security.



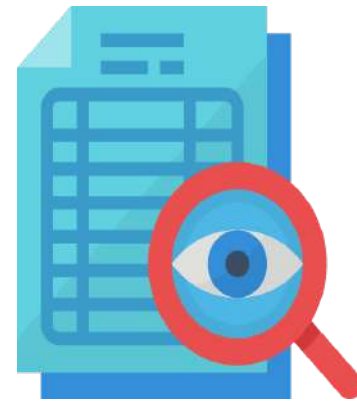
USER-FRIENDLY

The system provides user-friendly menus and graphics, a capability to hide, show and move columns around to customize screens per user. The menus and windows are designed in groups that deal with different cycles of accounting and management titles.



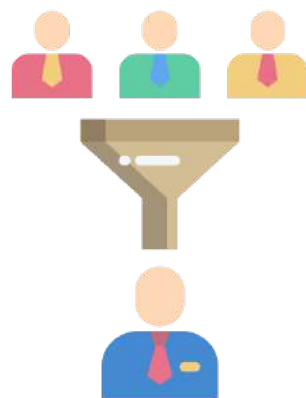
DRILL DOWN FUNCTIONALITY

A complete drill down functionality showing all details of each transaction on every report.



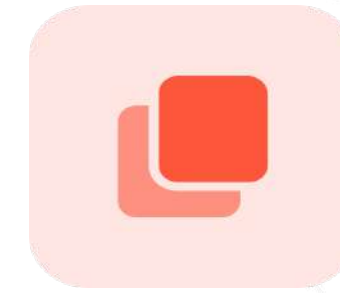
FULL AUDIT TRAIL

Every change in the system is audited on the field level, giving authorized users access to view all historical changes of any piece of data with who/what/where/and when information.



FILTERING CAPABILITIES

Capability to filter tables by excluding or including any criteria.



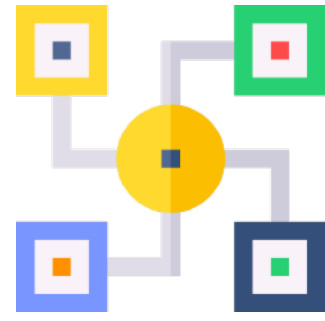
MACRO RECORDER

A tool to record recurring transactions for higher efficiency and productivity.



SMS INTEGRATION

Capability to send automated SMS notifications directly from the system per set configurable criteria for the accounts payable, accounts receivable, transactions and customer balances.



FULLY INTEGRATED MODULES

The package is fully integrated where all the data is entered through conventional vouchers directly on the screen. The system will eliminate the use of all paperwork whereby all transactions are entered once and automatically posted to corresponding modules, accounts and files.



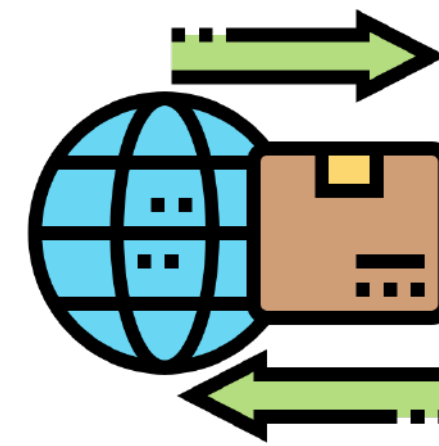
ADVANCED SEARCH FUNCTIONALITY

A unique detailed search mechanism which enables search in any given database, regardless of its size by searching through keywords or any other requested field. The search utilizes the Soundex algorithm that is especially handy for Arabic keyword searches.



REPORTS EXPORT

Capability to export all generated reports to Excel, JSON, XML, Text and HTML files, which can be opened by any other spreadsheet or word processing software.



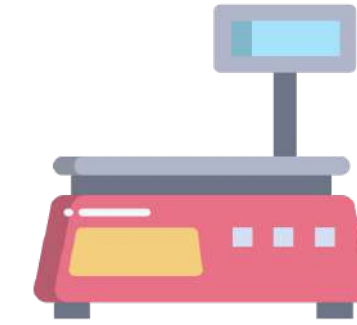
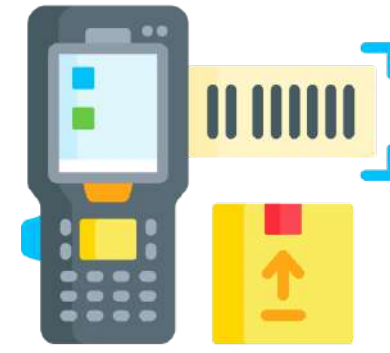
DATA & REPORTS IMPORT

Capability to import tables and lists from Excel, XML & Text with the appropriate account mapping and fields.



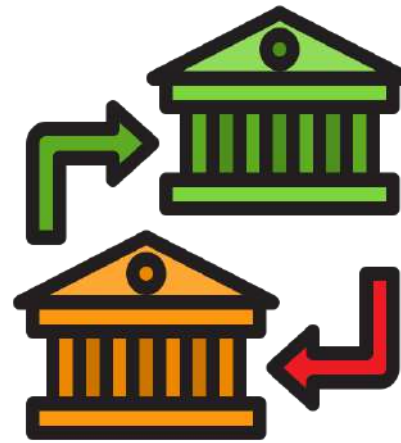
DOCUMENT ATTACHMENT

Ability to attach any file type with the related record or voucher, such as attaching purchase or expense invoices with related payment or journal voucher or attaching item picture with item file or for catalog view.



INTEGRATION WITH PERIPHERALS

Full integration with peripherals such as check readers and scanners, bar code readers, scales, document scanners and others.



BANK TRANSFER FORMS

User-defined HTML bank transfer forms printed directly from the payment vouchers.



MULTIPLE YEAR REPORTING

A full reporting capability per different periods and years allowing for multiple years reporting, overlapping years and cumulative periods.



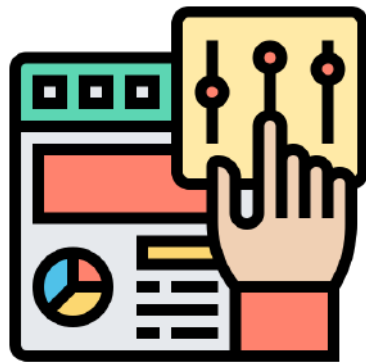
BARCODE READING & PRINTING

Integration with barcode readers for easy inventory taking and adding items in an invoice, in addition, to direct barcode printing for labels.



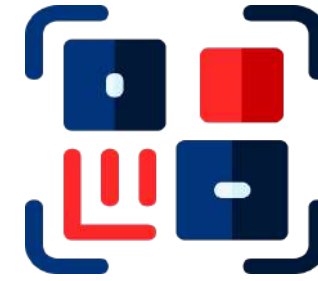
EMAIL INTEGRATION

Full integration with email systems, where single vouchers, such as purchase orders, invoices or receipts, could be sent. Also, bulk actions, such as pay slips or statements of accounts, are sent in PDF format as attachments to the e-mail and all transactions are logged and stored in the system for review.



CUSTOMIZED VIEWS

User customized views for all tables, to set preferences for certain criteria and they can be saved for future retrieval.



QR CODE FOR DELIVERY LOCATION

The ability to print a QR code on store issues and invoices indicating the contact's location for accurate and error free delivery.



USER PREFERENCES

An ability to define each user's language preference, setting default fields in transactions and customized views for tables.



RECORD CLONING

To accelerate the data entry and to save time and effort, you can clone any record available, whether it is a file or a voucher. Thus, providing a powerful feature for using any available voucher as a template, rather than building a separate template per voucher.



API DATA EXCHANGE

A capability to integrate with third party systems by utilizing the API data exchange module, thus, saving time and effort in data entry and ensuring accuracy.



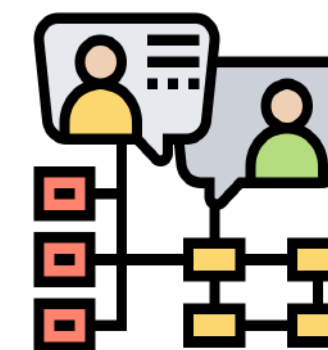
CHECK PRINTING & READING

Fully user-defined easy-to-use setup per bank account for check dimensions and available fields for any check format.



NOTIFICATION ALERTS

A feature to automatically generate customizable alerts from the system. These alerts include SMS messages, email notifications or pop-up messages on the screen.



CONTACT LANGUAGE PREFERENCE

Regardless of the default language the user is working with, a language preference for each contact may be defined; for sending invoices and SMS messages in a preferred different language.



MULTI-TAB INTERFACE

The system allows the user to open different menus and tables at the same time, to add new records and modify existing ones without having to interrupt the transaction you are working on.



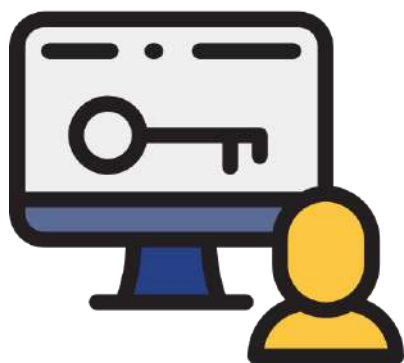
DASHBOARD & WIDGETS

A dashboard including various widgets for easy reading of data and reports in the system.



MULTIPLE USERS DEFINITION

Multiple users are each defined with assigned access rights up to the field level.

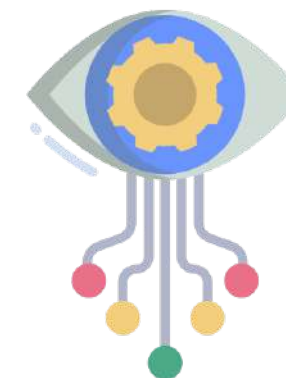


CUSTOMIZING USER SHORTCUTS & ICONS

The system provides consistent use of function keys and icons that are clearly defined. In addition, it provides a customized definition of shortcuts and icons per user.

WORKFLOW & ELECTRONIC TRANSACTION APPROVAL

To save time and ensure accuracy, the system offers a multi-level electronic approval structure per document. Thus, providing a paperless, fully tracked, automated and audited transaction processing based on your own set policies and procedures.



BISAN FINANCIAL FUNCTIONS

GENERAL LEDGER (GL)

A fully flexible and configurable chart of accounts framework with a multi-level file structure that can be adapted for all charts of account complexities and acts as the backbone for controlling budget, commitments, obligations and reporting in the accounting system. It also supports GFS coding structure.

ACCOUNTS RECEIVABLE & ACCOUNTS PAYABLE

Fully real time integrated module with the GL, multi-currency accounts management with consolidated reports for easy accurate comprehensive view for all contacts and vendor balances, in addition to detailed transactions with full analysis of each contact's activities.

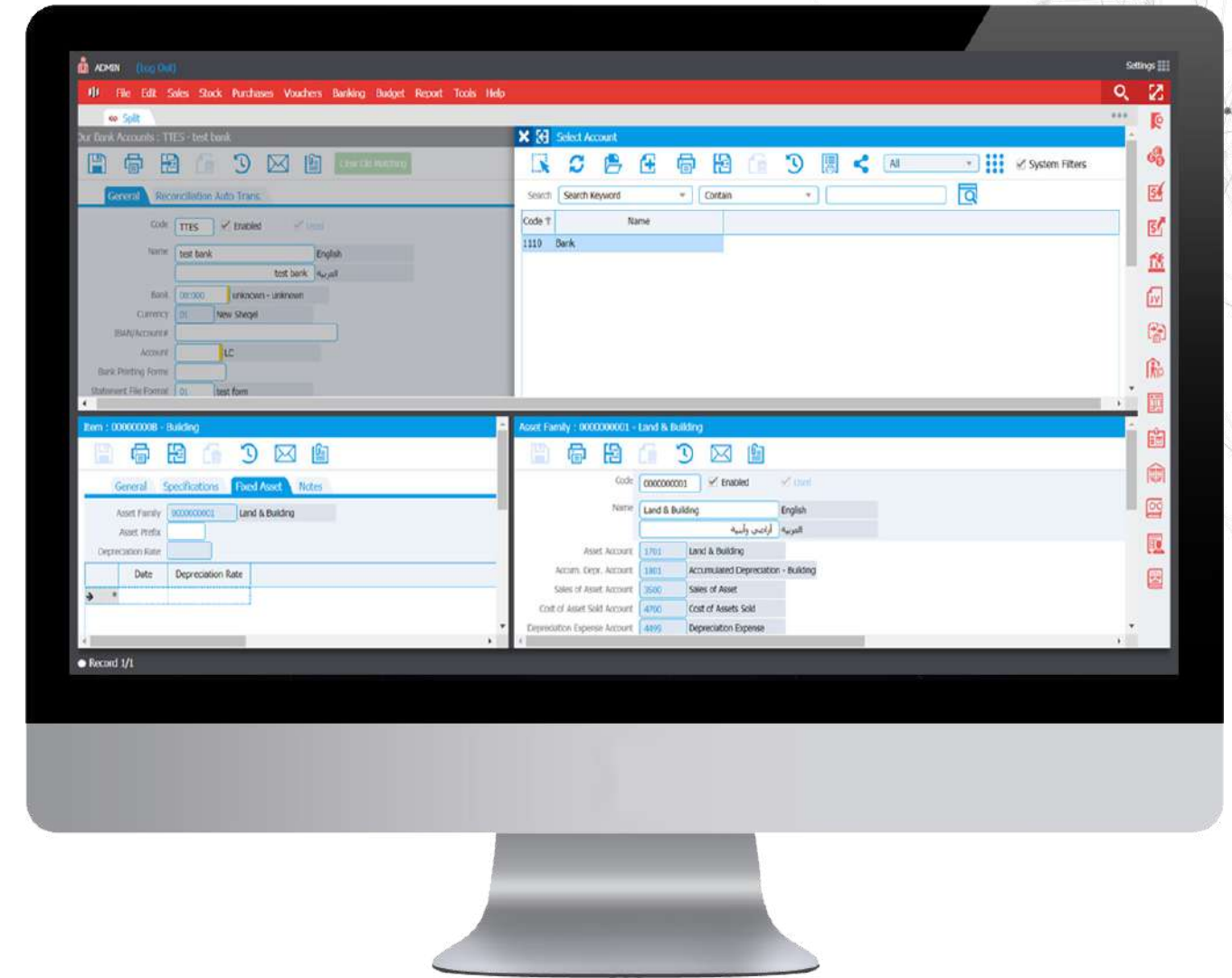


MULTIPLE SEGMENTS BCS

Featuring an unlimited number of account segments regardless of size, with sub ledgers giving you the flexibility of tracking transactions to the smallest detail. Clients could tailor segmented accounts to cope with management requirements, be it per fund, ministry, program, activity, department, project, cost center, location, currency or other.

MULTI-LEVEL FILE STRUCTURE

Providing grouping on any set of files whether general ledger accounts, A/R, A/P, assets to simplify data entry and provide flexible comprehensive reporting options.



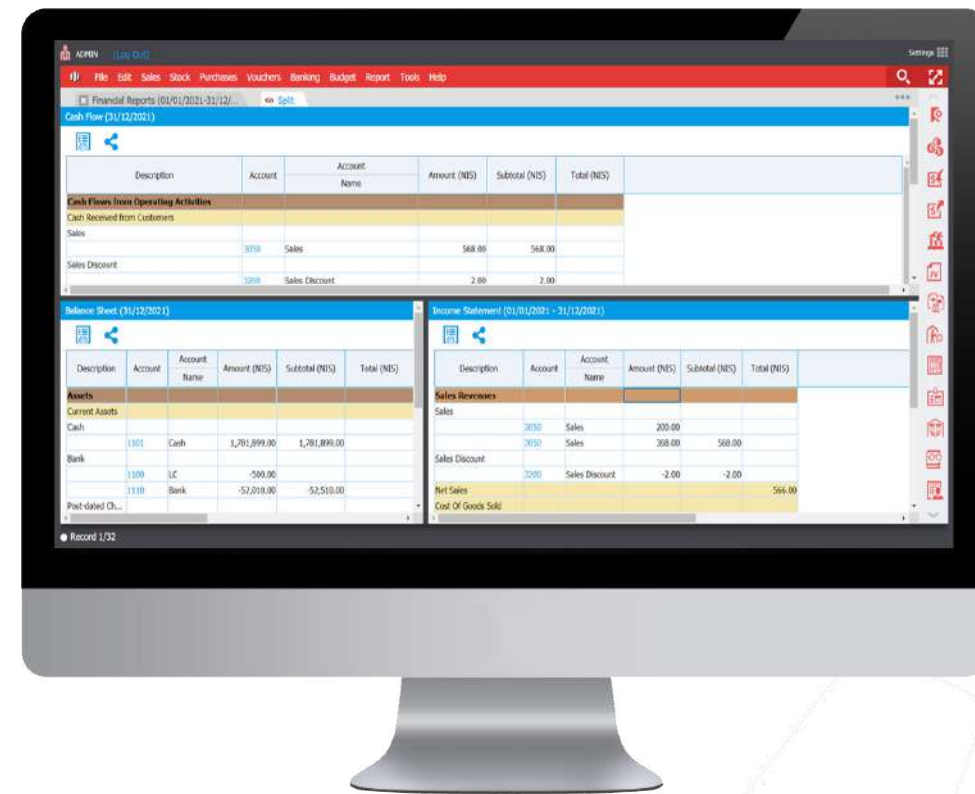


MULTI-CURRENCY MANAGEMENT

Full multi-currency management with user defined currencies and currency rates tracking, ability to use multiple currencies per voucher, with automated currency conversion and currency variance calculations vouchers allowing the management of as many currencies as needed, keeping track of account balances, statements and financial reports in the standard currency as well as any other defined currency. The system provides a multi-currency reporting and value translation for all available reports in the system.

FINANCIAL REPORTING & CASH FLOW

Comprehensive financial reports for any period of time, including (DD-MM-YY TO DD-MM-YY); giving flexibility for cross period and multiyear reporting, in addition to providing currency translation for extracting the reports in any desired currency defined in the system.



BISAN MODULES





BANKS & TREASURY MANAGEMENT

Bank Accounts Management: Management of multiple bank accounts and multiple currencies.

Check Management: Full management and tracking for received and issued checks and bank transfers with full details including due dates and endorsed checks.

Check Printing: Fully user-defined and ease-to-use setup per bank account for checks dimensions, with available fields for any available check format for printing directly from the system.

Check Reading: Integration with check readers for automatic reading and input of check information in receipt vouchers.

Bank Transfer Forms: User-defined HTML bank transfer forms printed directly from the payment vouchers.

Bank Account Ceiling Control: Managing and controlling bank accounts by setting ceilings limiting overdraft.



BUDGET EXECUTION & CONTROL

Real Time Full Integration: The Budget Execution and Control module is seamlessly integrated with the GL, and other modules providing real time reporting and budget control.

Budget Control: The module acts as a fail-safe ceiling ensuring no payments or obligations are processed if they exceed the set budget ceiling.

Budget Appropriation & Allotments: The budget sets two complimentary ceilings of control – one for commitment/obligation and one for controlling cash payments-based disbursement request authorizations.

Budget Flexibility: The flexibility of the budget control system will allow expenditures to be controlled at any required level, with a flexible easy setup, a user can build the budget at any level required in addition to the ability to have multiple budgets with different combinations for reporting and control purposes.

Reporting: Various numbers of reports, including; roll up accounts and segments, budgeted vs. actual expenditure.

Multi Year Budgets: The system allows setting up multiple year budgets with transaction and control across fiscal year.

Multiple Budgets per Period: The system allows creating multiple budgets per period for control purposes and reporting.

Budget Vouchers: Budget setup transactions are entered through special budget vouchers, keeping track of all additions, amendments and variations on any budget.

Flexible Dates: Flexible time span for each budget created allowing budgets per year, months, weeks and days; including non-consistent time intervals within the same budget.

Flexible Controls: Budgets could be defined as controlled budgets not allowing exceeding set amounts or uncontrolled budgets which are used for reporting purposes.



PROCUREMENT MANAGEMENT

Real Time Full Integration: The Procurement Management module is seamlessly integrated with the GL, Budget, and other modules handles all procurements from cradle to grave purchase request through PO issuance and receiving goods and services.

Obligation Control: Obligations cannot be created unless sufficient free budget is available. Once a PO is issued, the PO value is fully “earmarked” and funds are reserved for future payment.

Inventory & Warehouse Management: Full management of inventory with multiple warehouses and a set of special vouchers and reports providing full control and management for each received item and all related transactions.

Asset Management: In addition to automatic depreciation calculations, full tracking of assets locations and custody providing easy-to-use full control on assets inventory taking business intelligence and reporting.

CYBERSECURITY & ACCESS RIGHTS





ACCESS RIGHTS SECURITY

Users are organized in a tree fashion similar to that of the company's administrative tree, each user can be assigned specific access rights on any option, module and functionality in the system.



PASSWORD SECURITY

Controls for assigning password strength and requests to change it periodically.



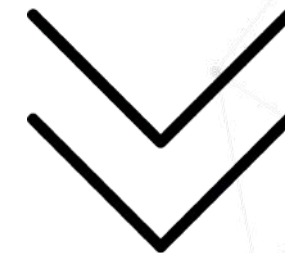
TWO-FACTOR AUTHENTICATION

A two-factor authentication for additional optional security that sends an SMS to the mobile number defined in the user's file. Users should enter the code sent in SMS to verify login and it can be defined to verify every login or only when trying to log in from new stations.



LOGIN SCHEDULE

Definable time schedules to permit users to log in to the system at specific schedules or times.





ADVANCED SECURITY

Permitting authorized users' access in permissible fields, sub-fields by defining criteria and rules per voucher or record field providing a high level of user access control.



STATION LOGIN SECURITY

In addition to usernames and passwords, a security option is defined for permitting specific stations to access the system.



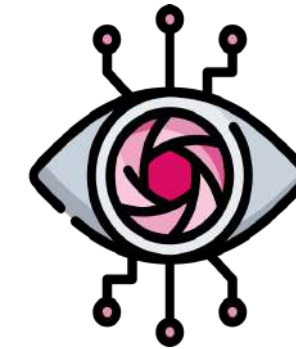
DOCUMENT PRINTING

User-defined document printing options allowing or denying access to print and post vouchers.



CONTROL DATES

User-defined set of controls for data entry security and control, such as: maximum and minimum allowed document dates from system date; per bank account lock date for reconciled bank statements; data entries lock date for last audited or reporting period. These controls guarantee unintentional data entry that will affect audited or submitted reports.



ELECTRONIC SIGNATURES

Assigning required signatures for approvals per voucher based on criteria and rules for fields such as voucher amount, branch, department and/or supplier.